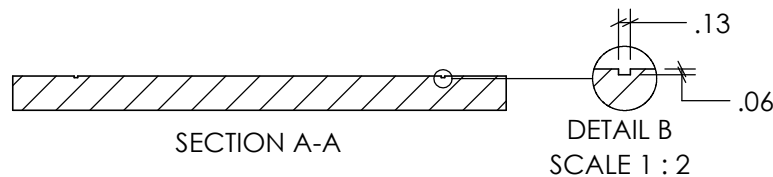
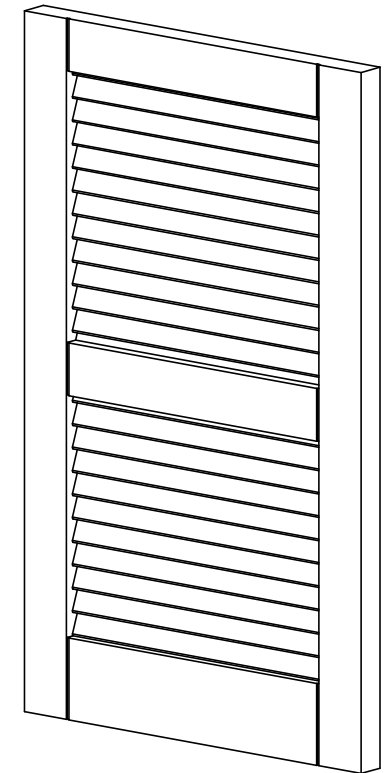
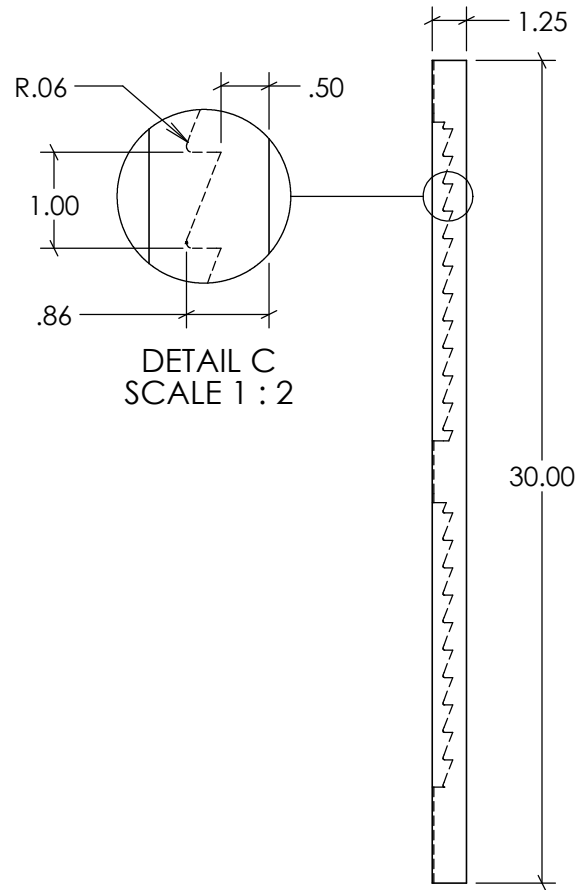
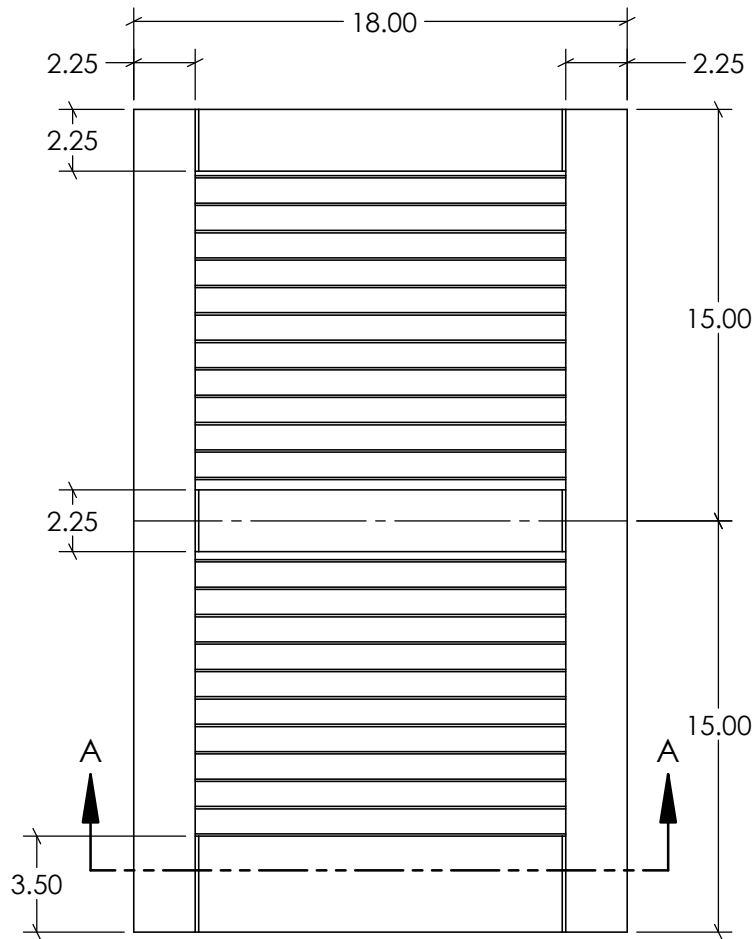


REVISIONS			
REV.	DESCRIPTION	DATE	REVISED BY
A			



Tolerances		Tolerances	
0-24" ±	40-48" ±	000-610 ±	1017-1219 ±
1/32" ±	5/64" ±	1.0mm	2.0mm
24-32" ±	48-60" ±	611-813 ±	1220-1514 ±
3/64" ±	3/32" ±	1.3mm	2.5mm
32-40" ±	60-70" ±	814-1016 ±	1515-1778 ±
1/16" ±	1/8" ±	1.6mm	3.2mm

NU-WOOD™

SYNTHETIC ARCHITECTURAL MILLWORK

As manufactured by Jasper Plastics

501 W Railroad Ave. Syracuse, IN 46567

574-534-1192 O. 253-595-3715 F. sales@nu-wood.com

COPYRIGHT 2018 NU-WOOD ALL RIGHTS RESERVED



DESCRIPTION: **NW_SHLV1830-DP**

Drawn by: **RSAGRE**

ITEM NO.

Date: 10/11/2021
Created: 10/11/2021

Volume: **1019.54 in³**

Scale: **1:7**