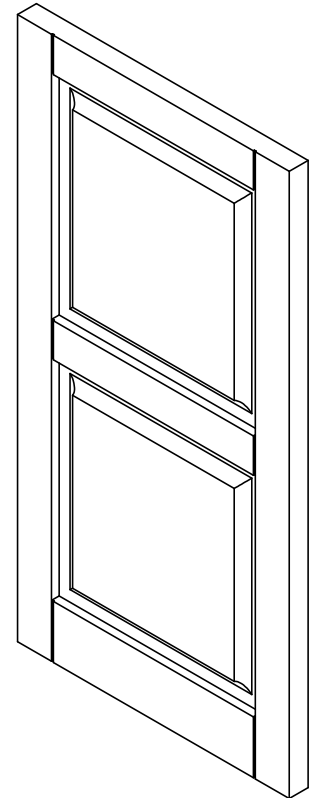
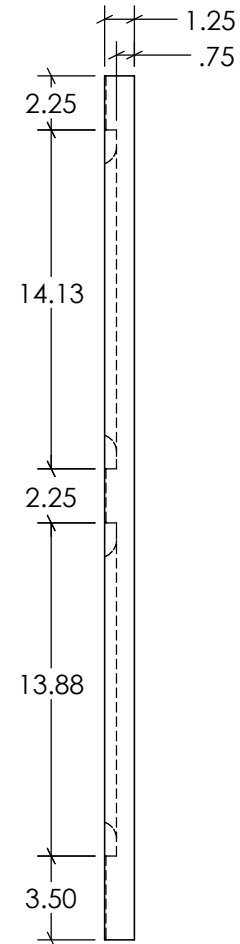
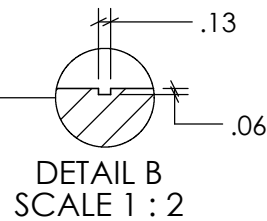
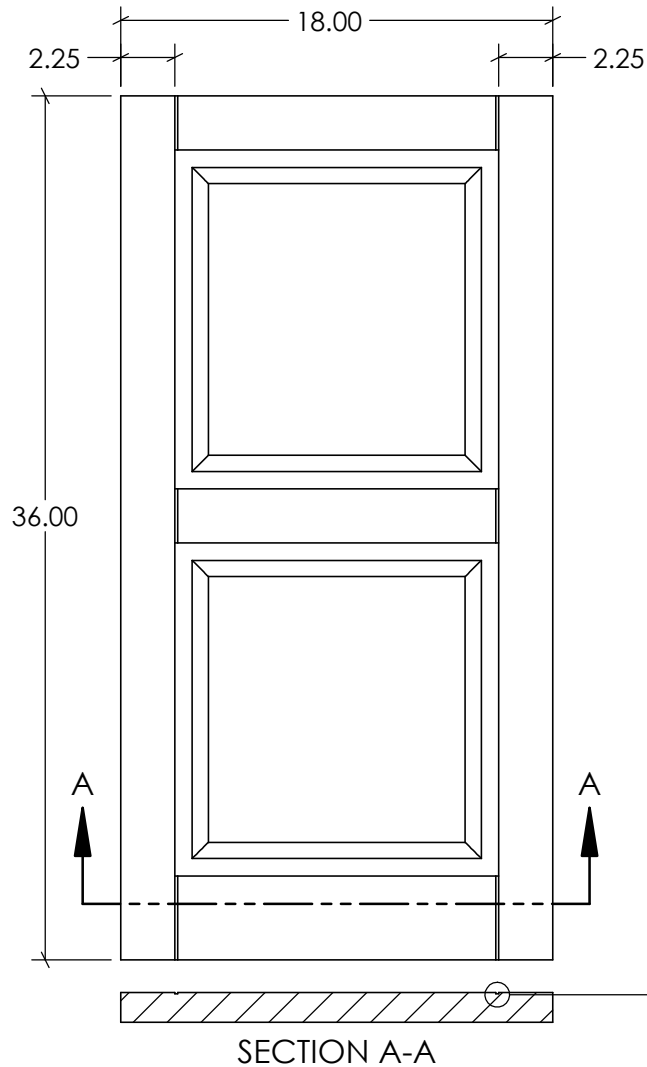


| REVISIONS | | | |
|-----------|-------------|------|------------|
| REV. | DESCRIPTION | DATE | REVISED BY |
| A | | | |



| Tolerances | | Tolerances | |
|------------|----------|------------|-------------|
| 0-24" ± | 40-48" ± | 000-610 ± | 1017-1219 ± |
| 1/32" | 5/64" | 1.0mm | 2.0mm |
| 24-32" ± | 48-60" ± | 611-813 ± | 1220-1514 ± |
| 3/64" | 3/32" | 1.3mm | 2.5mm |
| 32-40" ± | 60-70" ± | 814-1016 ± | 1515-1778 ± |
| 1/16" | 1/8" | 1.6mm | 3.2mm |

NU-WOOD™

SYNTHETIC ARCHITECTURAL MILLWORK

As manufactured by Jasper Plastics

501 W Railroad Ave. Syracuse, IN 46567

574-534-1192 O. 253-595-3715 F. sales@nu-wood.com

COPYRIGHT 2018 NU-WOOD ALL RIGHTS RESERVED



DESCRIPTION: **NW_SHU1836-DP**

Drawn by: **RSAGRE**

ITEM NO.

Date: 10/20/2021
Created: 10/20/2021

Volume:
1497.4 in³

Scale:
1:8