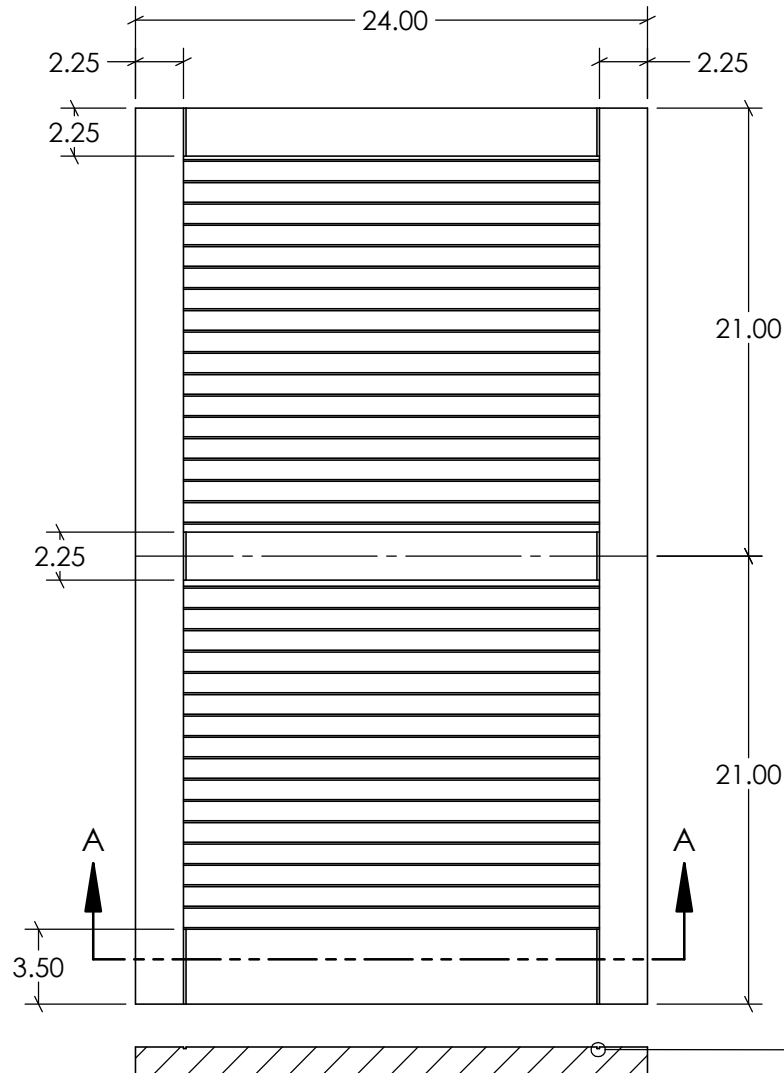
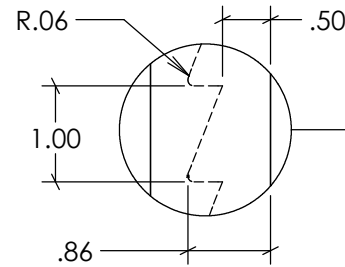


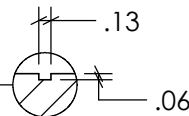
| REVISIONS |             |      |            |
|-----------|-------------|------|------------|
| REV.      | DESCRIPTION | DATE | REVISED BY |
| A         |             |      |            |



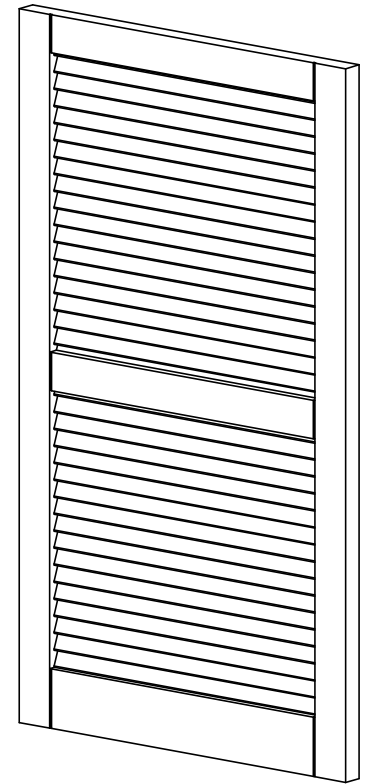
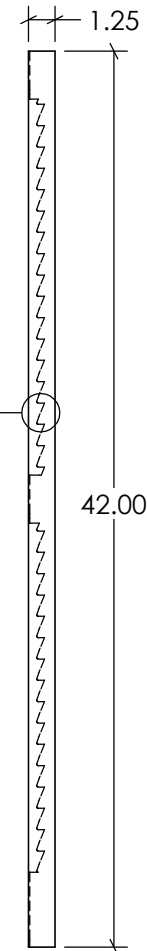
SECTION A-A



DETAIL C  
SCALE 1 : 2



DETAIL B  
SCALE 1 : 2



| Tolerances |          | Tolerances |             |
|------------|----------|------------|-------------|
| 0-24" ±    | 40-48" ± | 000-610 ±  | 1017-1219 ± |
| 1/32"      | 5/64"    | 1.0mm      | 2.0mm       |
| 24-32" ±   | 48-60" ± | 611-813 ±  | 1220-1514 ± |
| 3/64"      | 3/32"    | 1.3mm      | 2.5mm       |
| 32-40" ±   | 60-70" ± | 814-1016 ± | 1515-1778 ± |
| 1/16"      | 1/8"     | 1.6mm      | 3.2mm       |

**NU-WOOD**<sup>TM</sup>

SYNTHETIC ARCHITECTURAL MILLWORK

As manufactured by Jasper Plastics

501 W Railroad Ave. Syracuse, IN 46567

574-534-1192 O. 253-595-3715 F. sales@nu-wood.com

COPYRIGHT 2018 NU-WOOD ALL RIGHTS RESERVED



DESCRIPTION: NW\_SHLV2442-DP

Drawn by: RSAGRE

ITEM NO.

Date: 10/13/2021  
Created: 10/13/2021

Volume: 1781.88 in<sup>3</sup>

Scale: 1:9