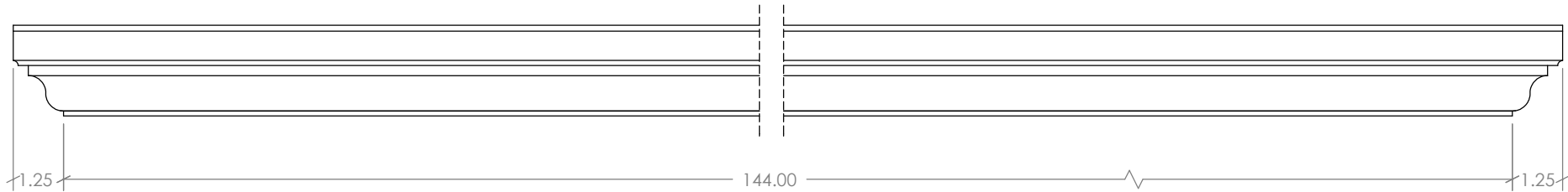
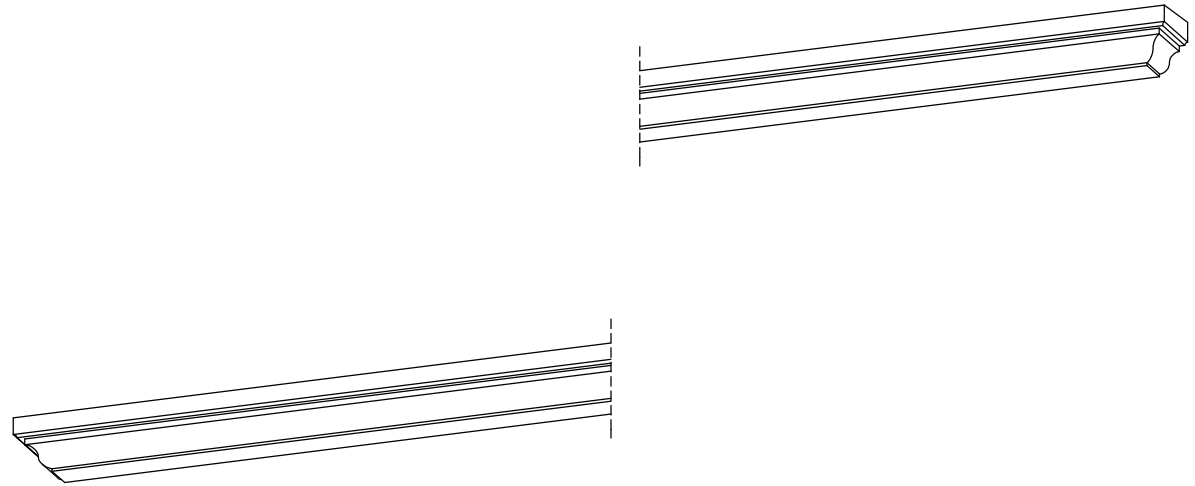
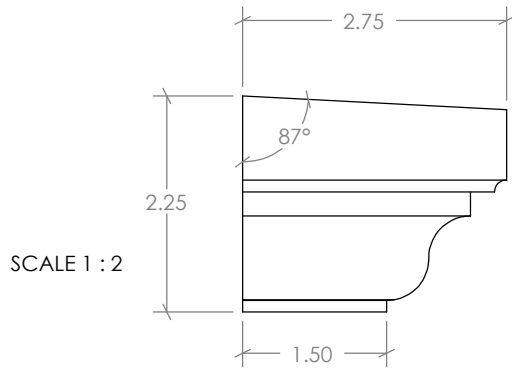


| REVISIONS | | | |
|-----------|-------------|------|------------|
| REV. | DESCRIPTION | DATE | REVISED BY |
| A | | | |



| Tolerances | | Tolerances | |
|------------|----------|------------|-------------|
| 0-24" ± | 40-48" ± | 000-610 ± | 1017-1219 ± |
| 1/32" | 5/64" | 1.0mm | 2.0mm |
| 24-32" ± | 48-60" ± | 611-813 ± | 1220-1514 ± |
| 3/64" | 3/32" | 1.3mm | 2.5mm |
| 32-40" ± | 60-70" ± | 814-1016 ± | 1515-1778 ± |
| 1/16" | 1/8" | 1.6mm | 3.2mm |

NU-WOODTM
BY JASPER PLASTICS



ALL OF NU-WOOD'S
PRODUCTS ARE PROUDLY
SOURCED AND MADE IN
AMERICA!



501 W Railroad Ave. Syracuse, IN 46567
Office: 574-457-2062
sales@nu-wood.com



COPYRIGHT 2024 NU-WOOD ALL RIGHTS RESERVED

Description: **NW WL2144**

Drawn by: **EJSAGRE**

Item No.: **319140109**

Date: 05/08/2025
Created: 05/08/2025

Vol.: **731.66 in³**

Scale: **1 : 4**