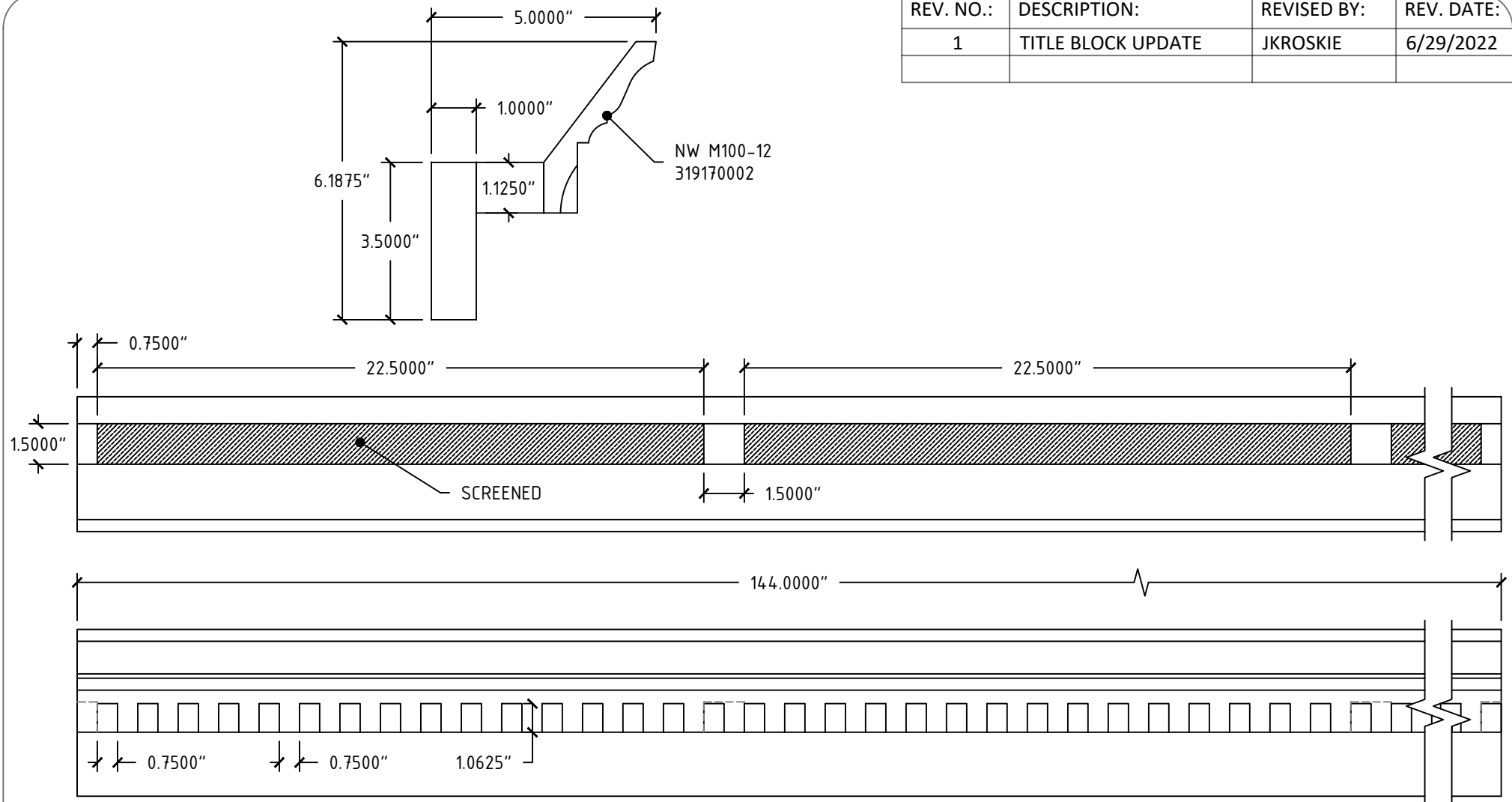


REV. NO.:	DESCRIPTION:	REVISED BY:	REV. DATE:
1	TITLE BLOCK UPDATE	JKROSKIE	6/29/2022



Tolerances		Tolerances	
0-24" ± 1/32"	40-48" ± 5/64"	000-610 ± 1.0mm	1017-1219 ± 2.0mm
24-32" ± 3/64"	48-60" ± 3/32"	611-813 ± 1.3mm	1220-1514 ± 2.5mm
32-40" ± 1/16"	60-70" ± 1/8"	814-1016 ± 1.6mm	1515-1778 ± 3.2mm

NU-WOODTM

SYNTHETIC ARCHITECTURAL MILLWORK

NU-WOOD BY JASPER PLASTICS
501 W RAILROAD AVE SYRACUSE, IN 46567
Office: 574-457-2062 sales@nu-wood.com

COPYRIGHT 2018 NU-WOOD. ALL RIGHTS RESERVED



DESCRIPTION: NW_M100-12EVS

DRAWN BY: JKROSKIE

ITEM NO.: 319170352

DATE: 8/24/2015

VOLUME: 858.63 IN³ SCALE: NTS