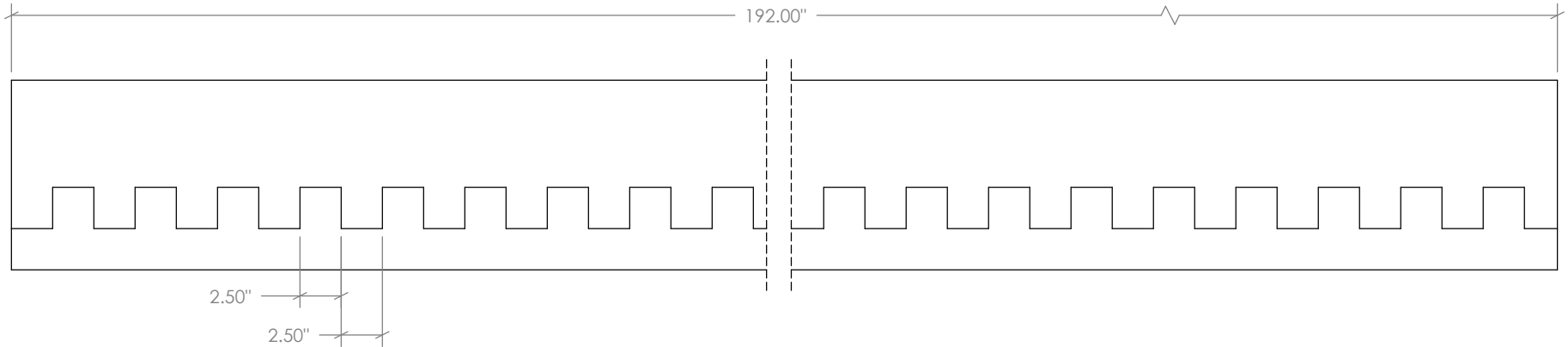
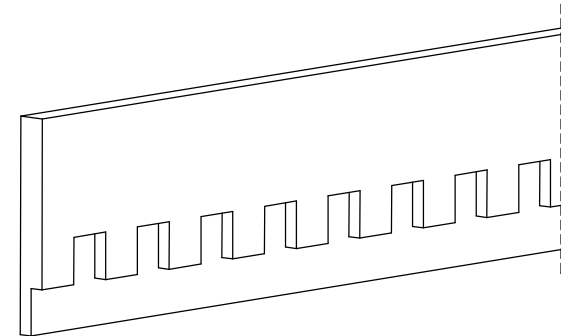


REVISIONS			
REV.	DESCRIPTION	DATE	REVISED BY
A			



Tolerances		Tolerances	
0-24" ±	40-48" ±	000-610 ±	1017-1219 ±
1/32"	5/64"	1.0mm	2.0mm
24-32" ±	48-60" ±	611-813 ±	1220-1514 ±
3/64"	3/32"	1.3mm	2.5mm
32-40" ±	60-70" ±	814-1016 ±	1515-1778 ±
1/16"	1/8"	1.6mm	3.2mm

**NU-WOOD**<sup>TM</sup>  
BY JASPER PLASTICS



ALL OF NU-WOOD'S  
PRODUCTS ARE PROUDLY  
SOURCED AND MADE IN  
AMERICA!



501 W Railroad Ave. Syracuse, IN  
46567

Office: 574-457-2062  
sales@nu-wood.com



COPYRIGHT 2024 NU-WOOD ALL RIGHTS RESERVED

Description: **NW M113-16**

Drawn by: **RSAGRE**

Item No.: **319170026**

Date: 02/13/2025  
Created: 02/13/2025

Vol.: **2773.88 in<sup>3</sup>**

Scale: **1 : 10**