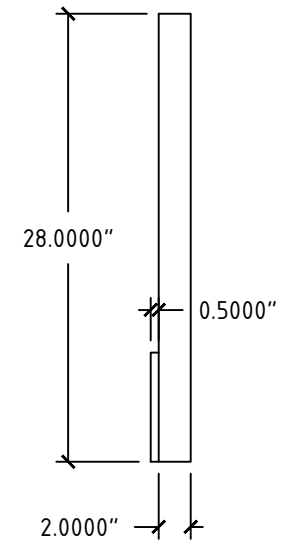
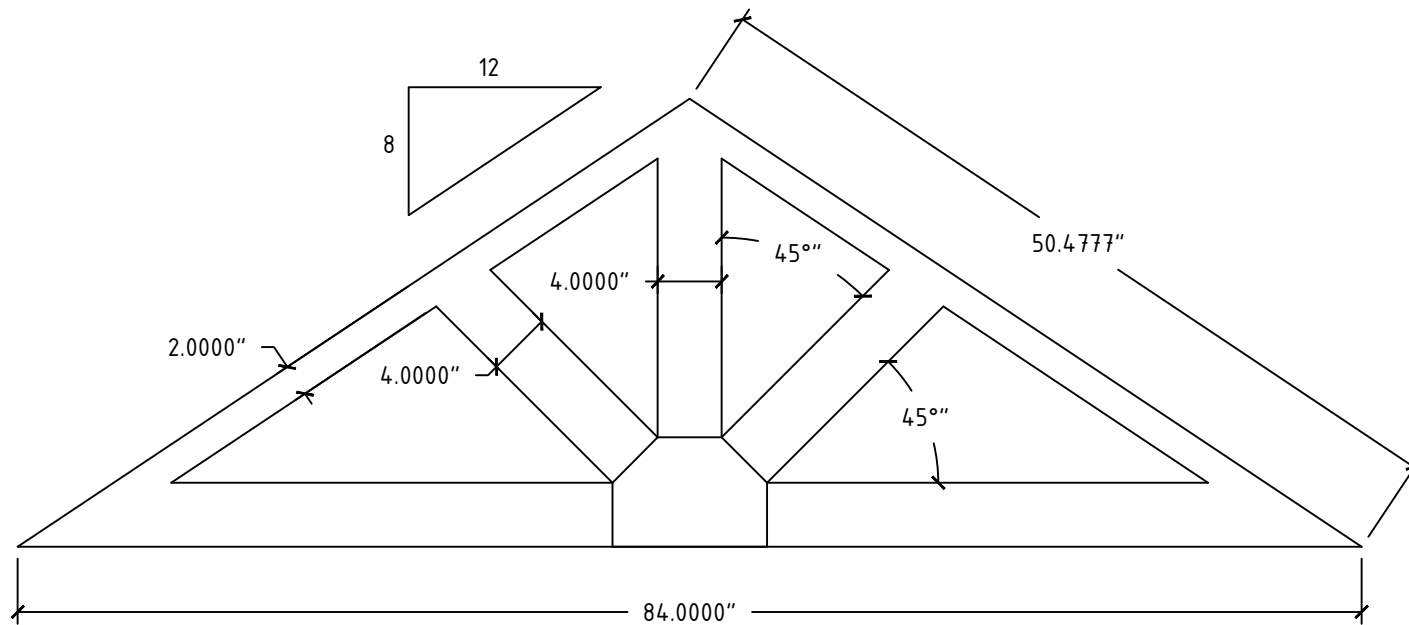
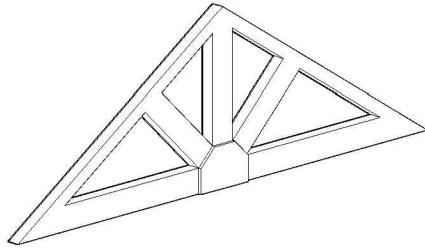


REV. NO.:	DESCRIPTION:	REVISED BY:	REV. DATE:



Tolerances		Tolerances	
0-24" ± 1/32"	40-48" ± 5/64"	000-610 ± 1.0mm	1017-1219 ± 2.0mm
24-32" ± 3/64"	48-60" ± 3/32"	611-813 ± 1.3mm	1220-1514 ± 2.5mm
32-40" ± 1/16"	60-70" ± 1/8"	814-1016 ± 1.6mm	1515-1778 ± 3.2mm

**NU-WOOD**<sup>TM</sup>

SYNTHETIC ARCHITECTURAL MILLWORK

NU-WOOD BY JASPER PLASTICS

501 W RAILROAD AVE SYRACUSE, IN 46567

574-534-1192 O. 253-595-3715 F. sales@nu-wood.com

COPYRIGHT 2018 NU-WOOD ALL RIGHTS RESERVED



DESCRIPTION: NW\_SGD84-8/12

DRAWN BY: JKROSKIE

ITEM NO.: 319131920

DATE: 8-16-2019

VOLUME: 1409.70 IN<sup>3</sup>

SCALE: 1 = 12