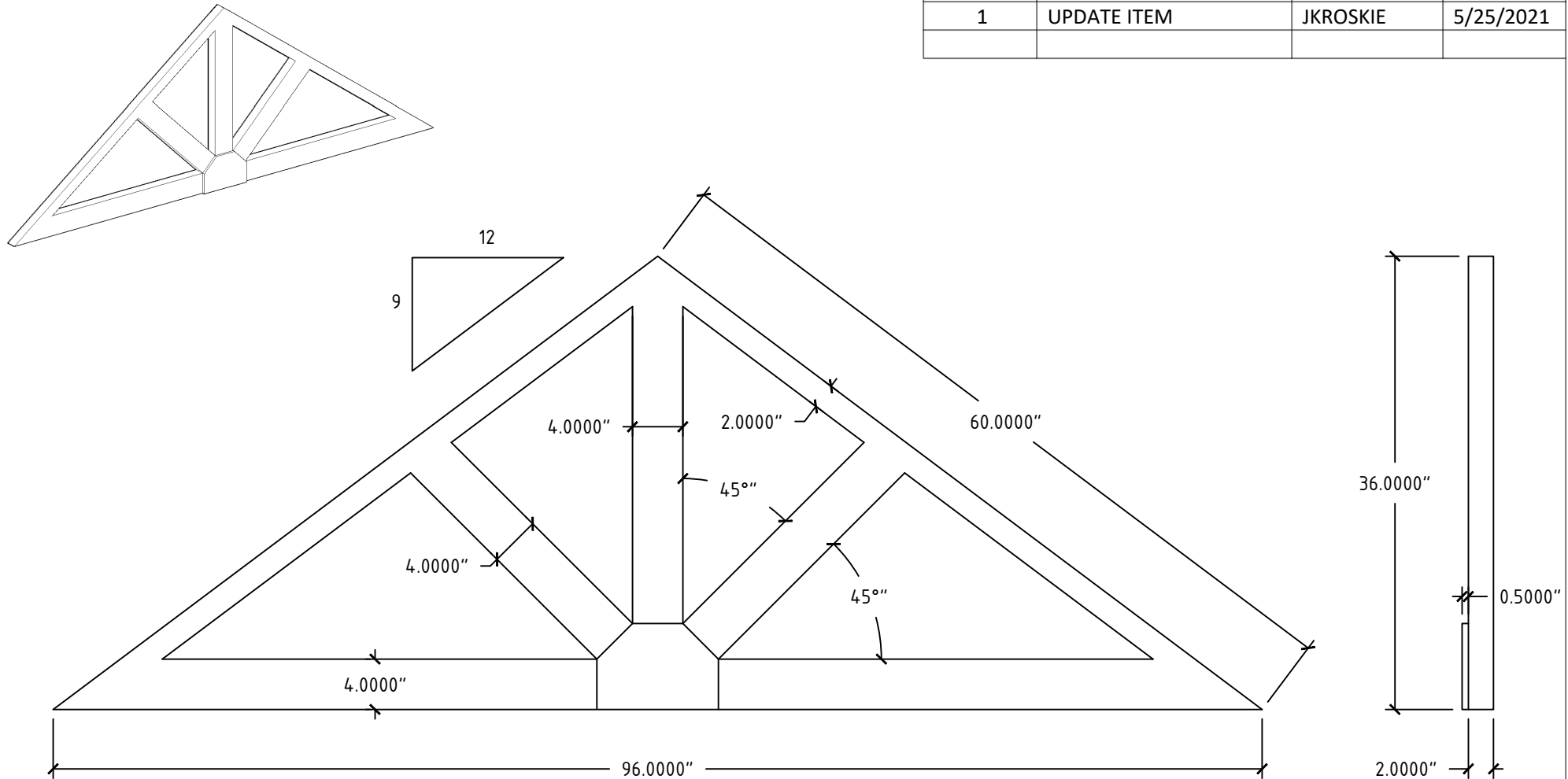


REV. NO.:	DESCRIPTION:	REVISED BY:	REV. DATE:
1	UPDATE ITEM	JKROSKIE	5/25/2021



Tolerances		Tolerances	
0-24" $\pm 1/32"$	40-48" $\pm 5/64"$	000-610 $\pm 1.0\text{mm}$	1017-1219 $\pm 2.0\text{mm}$
24-32" $\pm 3/64"$	48-60" $\pm 3/32"$	611-813 $\pm 1.3\text{mm}$	1220-1514 $\pm 2.5\text{mm}$
32-40" $\pm 1/16"$	60-70" $\pm 1/8"$	814-1016 $\pm 1.6\text{mm}$	1515-1778 $\pm 3.2\text{mm}$

NU-WOODTM

SYNTHETIC ARCHITECTURAL MILLWORK

NU-WOOD BY JASPER PLASTICS
501 W RAILROAD AVE SYRACUSE, IN 46567
574-534-1192 O. 253-595-3715 F. sales@nu-wood.com

COPYRIGHT 2018 NU-WOOD ALL RIGHTS RESERVED



DESCRIPTION: NW_SGD96-9/12

DRAWN BY: JKROSKIE ITEM NO.: 319131546

DATE: 2/8/2018 VOLUME: 1740.35 IN³ SCALE: 1 = 12