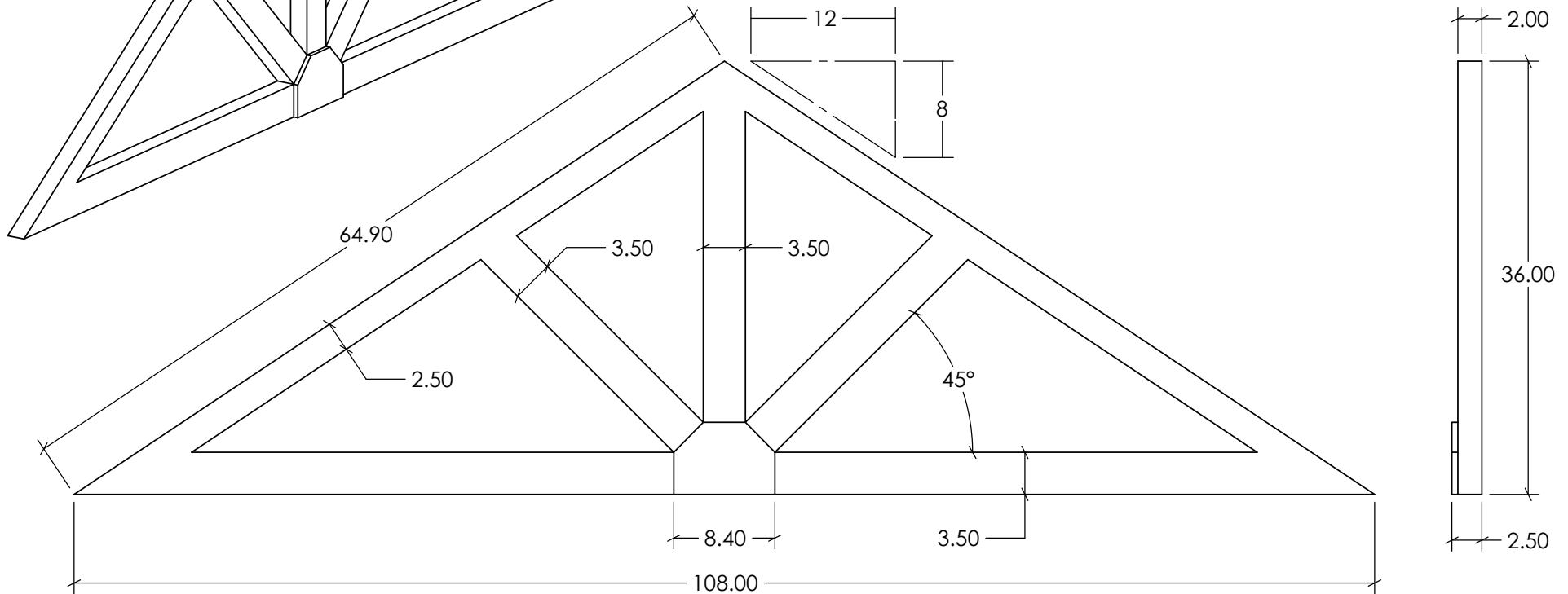


REVISIONS			
REV.	DESCRIPTION	DATE	REVISED BY
A			



Tolerances		Tolerances	
0-24" ±	40-48" ±	000-610 ±	1017-1219 ±
1/32"	5/64"	1.0mm	2.0mm
24-32" ±	48-60" ±	611-813 ±	1220-1514 ±
3/64"	3/32"	1.3mm	2.5mm
32-40" ±	60-70" ±	814-1016 ±	1515-1778 ±
1/16"	1/8"	1.6mm	3.2mm

NU-WOOD™

SYNTHETIC ARCHITECTURAL MILLWORK

As manufactured by Jasper Plastics

501 W Railroad Ave. Syracuse, IN 46567

574-534-1192 O. 253-595-3715 F. sales@nu-wood.com

COPYRIGHT 2018 NU-WOOD ALL RIGHTS RESERVED



DESCRIPTION: NW_SGD108-8/12

Drawn by: RSAGRE

ITEM NO. 319131515

Date: 06/14/2021
Created: 06/14/2021

Volume: 1826.82 in³

Scale: 1:13